

## JASPER MASK RETRO



This procedure should take about 2 to 2 1/2 hours, after you read through the instructions and are prepared when you start, preferably on a Tues, Wed, or Thurs. This will allow us to provide you with additional support (972) 258-5557). What's that saying? "If you read the instructions all else wouldn't fail."

Tools needed: instructions                      hammer                      pencil or pen  
                         center-hole punch                      3/8 wrench                      fur brush  
                         1 1/32-wrench                      7/16 wrench  
                         1/2 wrench                      phillips screwdriver  
                         flat screwdriver                      measuring tape  
                         drill motor                      razor knife  
                         7/32-drill bit                      3/16 drill bit

Supplies provided: 2 sets of 10-24 X 1 1/4" screw w/washer & nylock nut  
                         2 set of 10-24 X 1" screw w/washer

Supplies needed: all-purpose cleaner                      rags  
                         Lubriplate

Step 1: Read the instructions to get an understanding of the procedure and to be prepared. Check to make sure you have all the parts, tools, and supplies you need. **Suggestion:** P.M. and repair Jasper the day before you install the new mask.

Step 2: Air down character. Remove old mask, head helmet, and shirt.



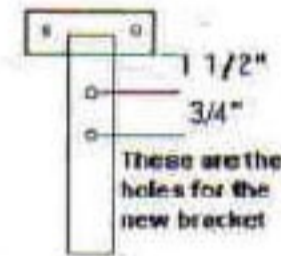
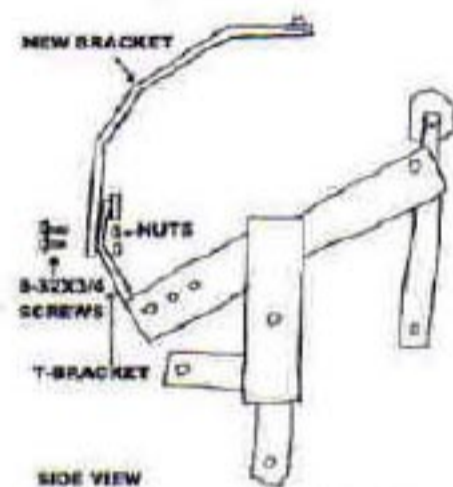
Step 3: If not already done, repair, clean, and lubricate head assembly.

Step 4: On the head frame between the eyes, using a pen or pencil, mark for hole drilling  $5/8$ " down & center

Step 5: With center punch and hammer mark hole for drilling.

Step 6: Using  $7/32$  drill bit, drill the marked hole.

Step 7: On the back of the head-frame, there is the T-frame for the mouth cylinder. From the bottom of the top of the "T" measure down  $1\ 1/2$ " and in the center of the frame mark for a hole, then  $3/4$ " lower mark for another hole in the center of the frame.



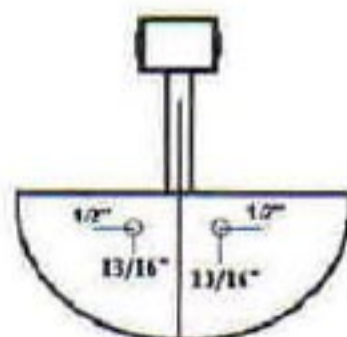
This is the T-frame for the mouth cylinder

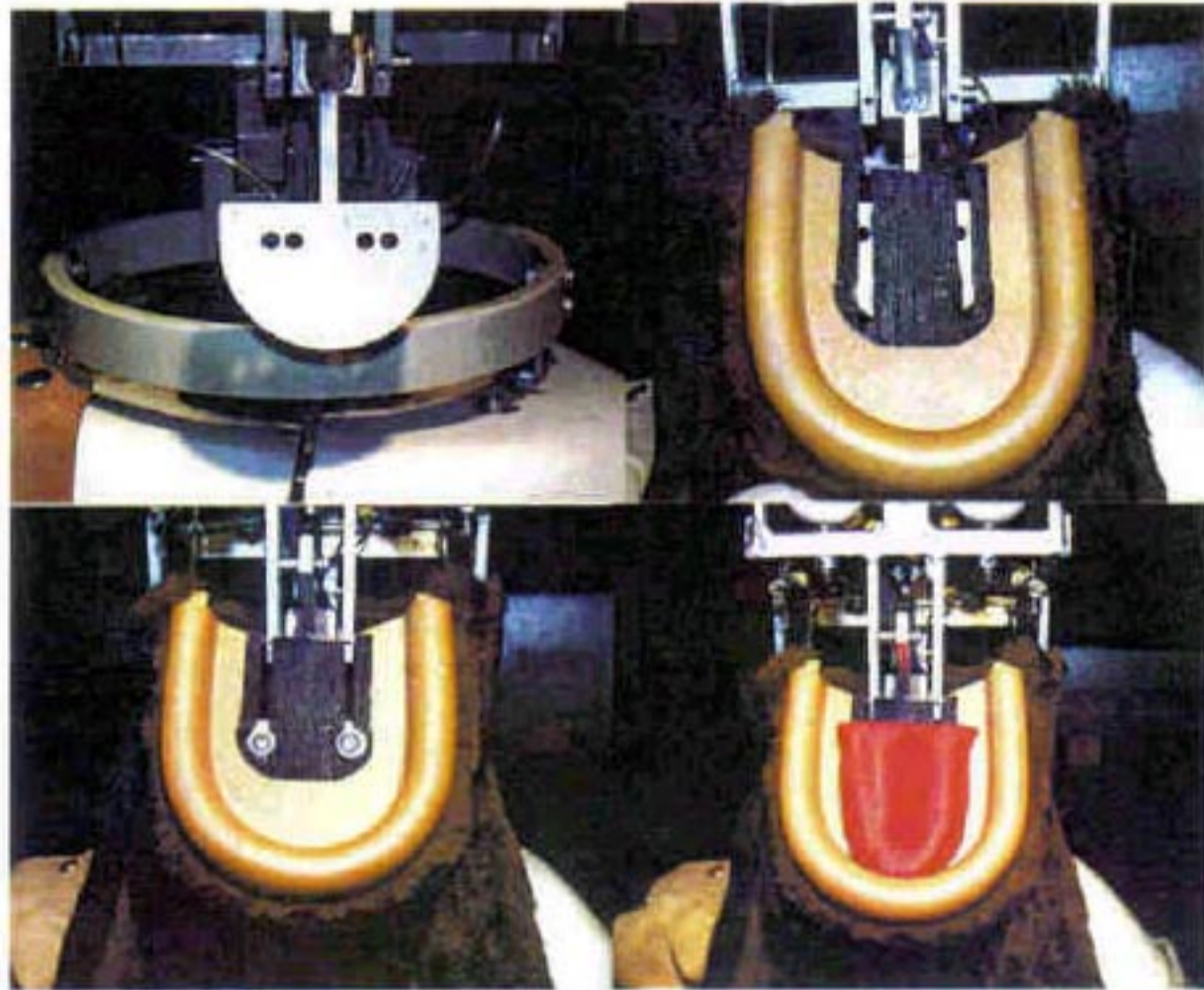
Step 8: Using center punch and hammer mark holes for drilling.

Step 9: Using a  $7/32$ " drill bit, drill the marked holes. Insert the 10-24 X  $1\ 1/4$ " screws with the heads and washers on the outside of the frame and the nylock nut on the inside of the frame.

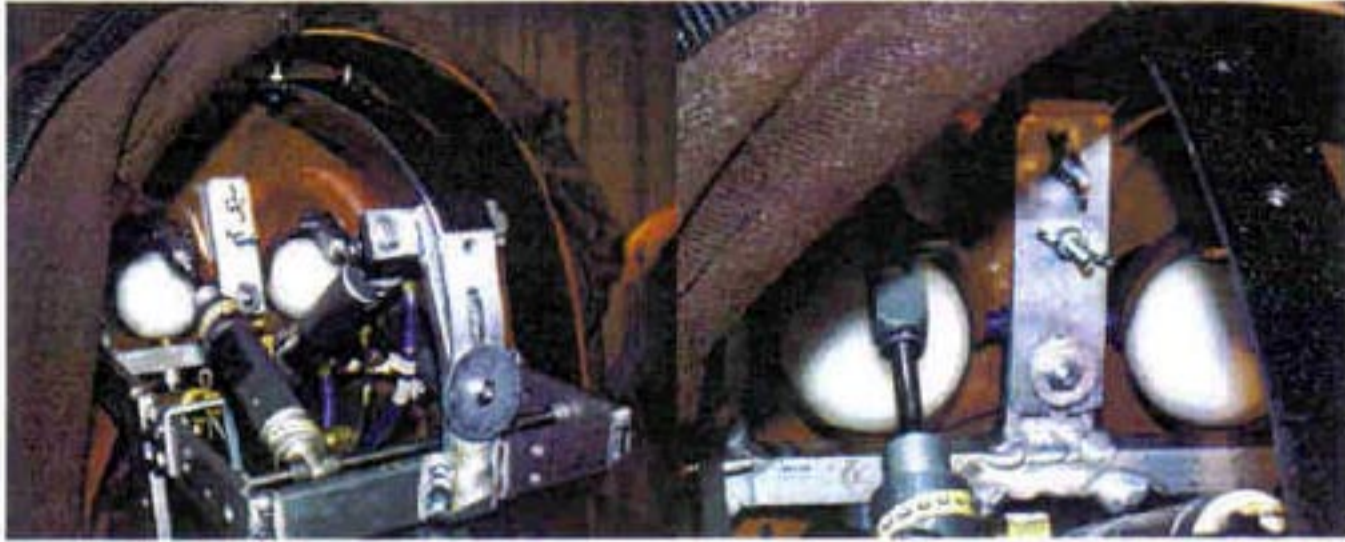
Step 10: Installing jaw: First (with a pen or pencil) mark the holes for drilling. Measure a  $13/16$ " from the center of the mouth plate (on both sides), then a  $1/2$ " from the back of the mouth plate. Then center punch the marks, and drill the holes using  $7/32$  drill bit. (Continue)

Put the 10-24 X  $1$ " screws in the holes, with the head and washer on top, and the nut on the under side of the mouth plate. Install jaw to mouth lever, (leaving screws slightly loose).





Step 11: Installing the mask: Take the face mounting bracket screw, insert it into the hole in the head frame between the eyes, from the front. Next put the washer and wing nut on the screw, slip the face-mounting bracket between the washer and the head frame, snug down the nut (not tight). Hold the new mask up to the head frame, inserting the two screws on the inside of the mask through the two holes in the face mounting bracket, put the wing nuts on. Align mask with the eyes and eye-sockets aligned with one hand, then tighten mounting bracket, with the other hand. Slip the new head frame bracket under the head and washer of the screw on the back of head frame. Then snug screws to frame, but not tight. Now snap the 3 snaps of the new head frame bracket to the snaps inside the new mask. Then align mask properly and tighten the two screws on the back of the head frame.



Step 12: Install the back of the head by slipping the back head shell into the back of the mask, pressing slightly to make sure the velcro sticks properly. Next pull the fur around the back of the head and velcro it into place.



Step 13: Checking the mouth movement manually: Manually move the jaw up and down, checking for center alignment, rubbing, closing to much or not enough. Adjust properly then tighten screws under the tongue, then velcro tongue back.

Step 14: Installing the hat: Place Jasper's hat on top of his head with the brackets right behind his ears. Using a black marker, mark the hole in the bracket you are going to use for the screw to mount the bracket to the head (on the fur, both sides of the head). Remove hat; with a sharp razor knife cut an X through each mark that you just placed on the fur. Unvelcro the back of the head fur, and remove the back of the head. Then using a 7/32-drill bit, drill a hole in head plastic where the mark is. Next put a flat washer on the 10/24 X 1" screw, insert the screw into the drilled hole, from the inside of the head out, then put a flat washer on the outside of the head on the screw over the fur and a nylock nut then tighten down securely, (do the same for the other side). Put the back of the head back on, and Velcro the back of the head fur, back together.

Mount the hat onto the head, and then take the remaining two nylock nuts put one on each side of the head on the screws to secure the hat to the head. Straighten up the ears to hide the ears.



Step 14: Checking movement with the computer: The reason for this is as usual to check the movements for proper speed, or rough movement, and to check the lengths of the range of motion. First air up the charter, then power up the computer.

A. On the LCD display push the "enter" button twice. It will show.

DIAGNOSTICS

VCR ADJUST

B. Then push the "down" button four times. It will show.

DIAGNOSTICS

JASPER

C. Next push the "enter" button twice. It will show.

JASPER (on/off flashing)

MOUTH

This will start the mouth movement. To stop the movement, just push the "enter" button once. Make the proper adjustments, and repeat this step as many times as needed.

Step 17: Check the rest of the head movements, using the same procedure as above or a Diagnostics tape. After checking and properly adjusting everything, finish putting Jasper back together again. Clean and brush Jasper.



Step 18: Pick up and clean area.

Step 19: Start show.

Step 20: Have a Great CEC Day!!

If you have any question call Robert at (972) 258-5557.

## **JASPER MASK KIT LIST**

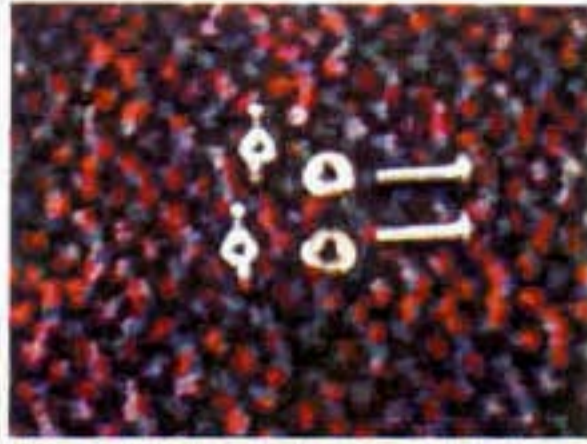
**1. FACE MASK**



**2. FACE MOUNTING BRKT**



**3. JAW HARDWARE**



**4. JAW**



**5. BACK HEAD SHELL**



**6. MASK FRAME**



# JASPER MASK RETRO CONVERSION GUIDE

Date of Origin: April, 2001

Archived: 1-10-13

Submission by ChuckEZone

Version 1.0

The documents contained herein are for educational use only.  
Please do not replicate, redistribute, or make any unauthorized  
printings. All intellectual property including characters,  
artwork, photography, and slogans are trademark and/or  
copyright their respective owners.

