



CHUCKE CHEESE'S®

Circle of Lights (Nova) Technical Manual

August 2014

Table of Contents

Page	Contents
1	Cover Page
2	Table of Contents
3	Start Up / Shut Down Procedures
4	Circle of Lights Show Installation
5	Video Flow
6	Audio Flow
7	Data Flow
8	Stage Layout
9-10	Change the Clock Settings
11-12	Reload the Shows
13	Start Segment from Pro Commander
14-15	Checking Movements and Lights
16	Resetting LED Controller Box
17-18	DMX Address & Dip Switch Settings
19-20	Resetting the IP Address and Factory Settings
21	COL LED Panel Control Board Layout
22-24	Flashing the Screen Address on LED Controller Boards
25-29	One Quadrant is Brighter than the Others
30-34	One Quadrant is Black & White or Data Issues

Circle of Lights Start Up / Shut Down Procedure

Start Up:

1. Turn on air compressor
2. After the compressor stops, drain the water from the tanks
3. Verify all circuit breakers are turned on for the showroom
4. Turn on the ISO Bar power strip on the wall by the rack
5. Wait for the rack to power up
 - a. The rack is fully powered up after the video runs for 30 seconds and then stops
6. Touch the Manager Panel
7. Enter the password and press "Enter"
8. Select "Start Up" from the main screen
9. The show should start up after a few seconds and the Manager Panel will display Segment 1

Shut Down:

1. Touch the Manager Panel
2. Enter the password and press "Enter"
3. Press "Shut Down" from the main screen
4. The show should stop and the screens will go blank
5. Turn off the ISO Bar power strip on the wall by the rack
6. Turn off the air compressor
7. Turn off the circuit breakers for the showroom

Studio C HD \ Circles of Light New Show Installation

*Before you follow the installation steps below, make sure you have received the latest **Show Update Software (Micro SD Card)** and **Show Media Content (USB stick)** from the Entertainment Department.*

Installation Steps:

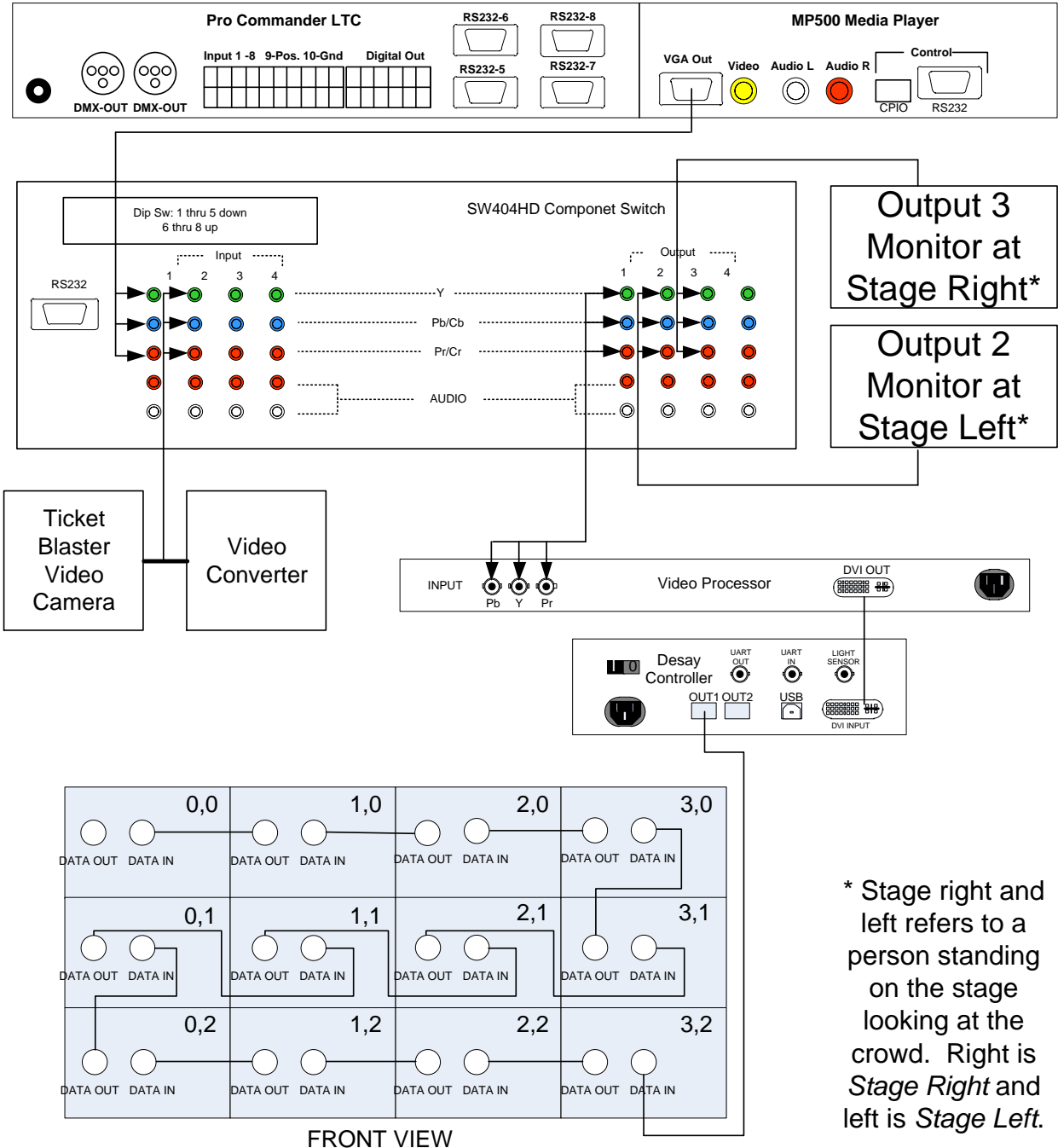
1. POWER up the rack and allow the Pro Commander to fully boot up. (Boot up time is approximately 1min and 32 sec.) After you hear the 15 sec video play, the boot up is complete.
2. Insert the USB stick into front of the Pro Commander LTC. All content should auto-load upon insertion. After a few seconds the video screens will display a message that the content is loading. This process will could take approximately 1 to 2 hours, give or take; you will know that the video portion is complete when video begins to play on its own. **DO NOT REMOVE USB DRIVE DURING THE LOADING PROCESS.**
3. After the media is loaded, remove the USB stick from the Pro Commander.
4. Power down the rack and remove the current Micro SD card from the front of the Pro Commander and replace it with the new one you just received. Allow the rack to remain powered down for at least 60 seconds.
5. Repeat Step 1 then go to Step 6 (Boot up is time approximately 1 min and 32 sec)
6. Go to your touch panel, enter your code, and then tap "Select a show" Now tap "Reload shows." This will load the content from the new micro SD card that you replaced in step 4 and should only take a few seconds.
7. In most cases the show will start up automatically at 9am. If the show install was completed after 9am, then you will need to start the show manually by doing the following from the touch panel:

Enter code (if the screen has timed out) Tap "Admin" and now tap "Start up" to start your show.

8. RETURN YOUR USB STICK AND YOUR OLD MICRO SD CARD TO THE ENTERTAINMENT DEPARTMENT.

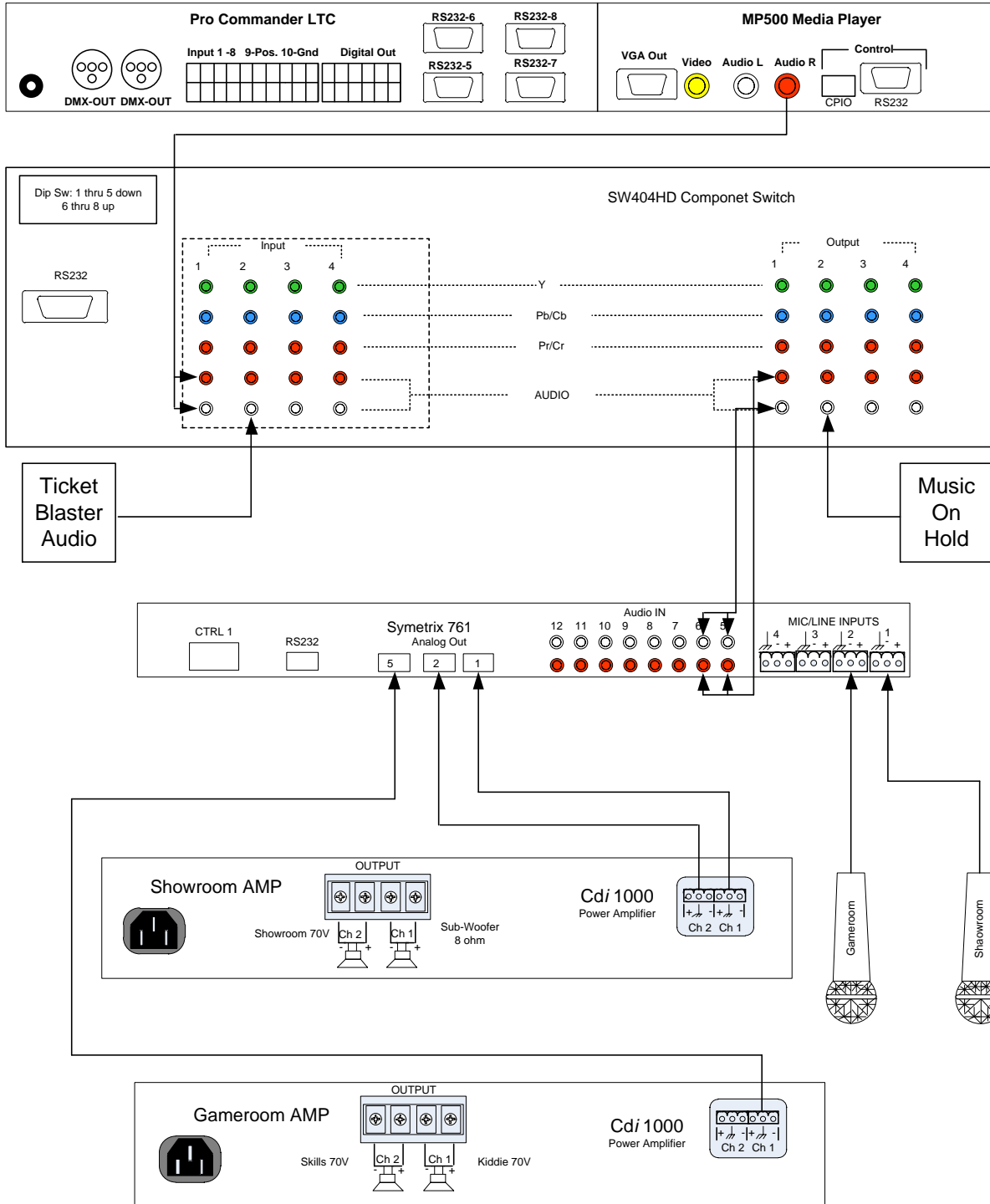
If you have any questions or concerns about installing your new show update, contact Michael Hill at 972-258-5613, or via email: mhill@cecentertainment.com. You can also contact Technical Support at 785-862-6002.

COL Video Flow (Nova)



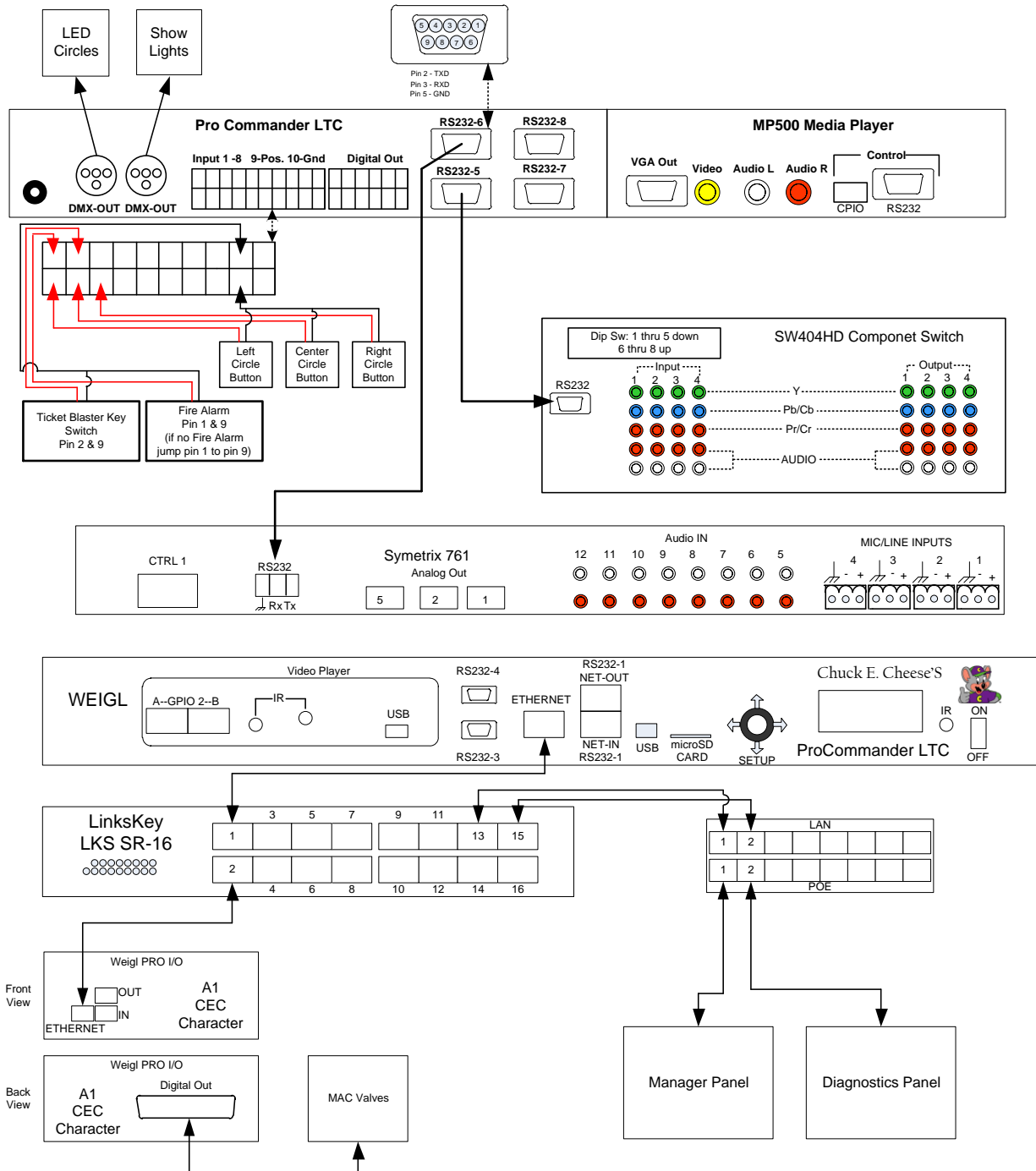
* Stage right and left refers to a person standing on the stage looking at the crowd. Right is *Stage Right* and left is *Stage Left*.

COL Audio Flow



6/5/2013

COL Data Flow

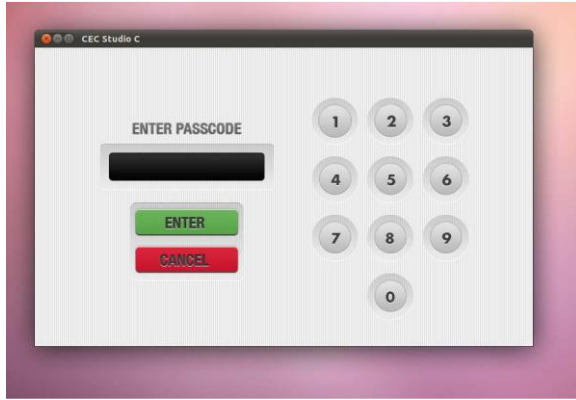


6/5/2013

Changing Clock Settings

To ensure that Live Show countdown starts at the properly, it is imperative that time on your Weigl system is set correctly. This can be done from your manager control panel by doing the following:

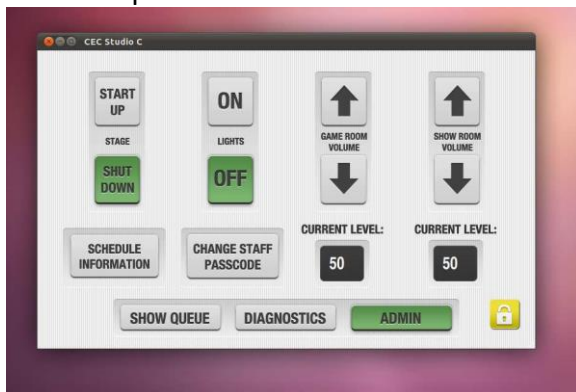
1. Enter your passcode



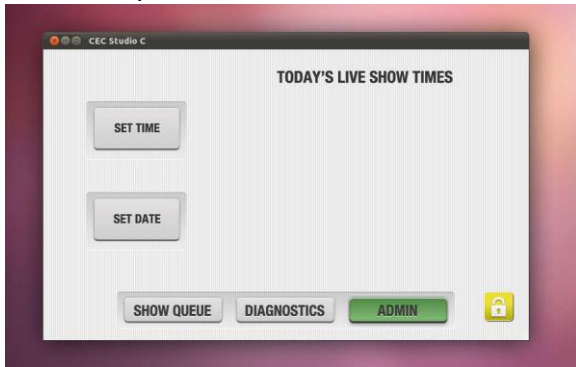
2. From here tap the "ADMIN" button.



3. Now tap "Schedule Information"



4. Then tap “Set Time”



5. From here use the arrow buttons to select the correct hour and minute. (In military time format)



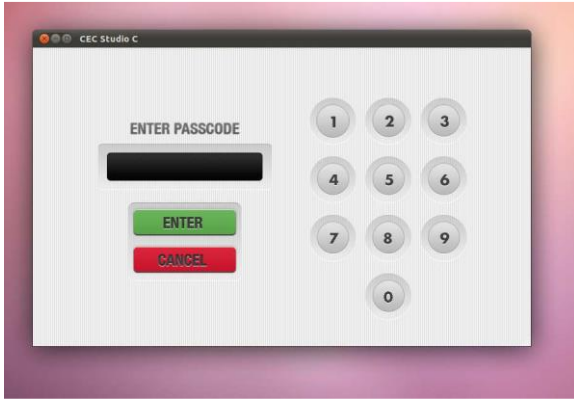
6. Once you've enter the correct time, tap “Enter.”

You will see a prompt confirming the changes and prompting a reboot. Select “OK” to allow the panel to reboot.

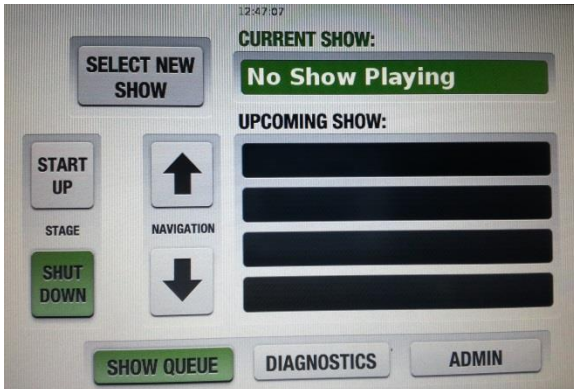
Reload the Shows with the Touch Panel

When the show scheduler is blank or if the shows are playing out of order, try to perform the following to reload the shows.

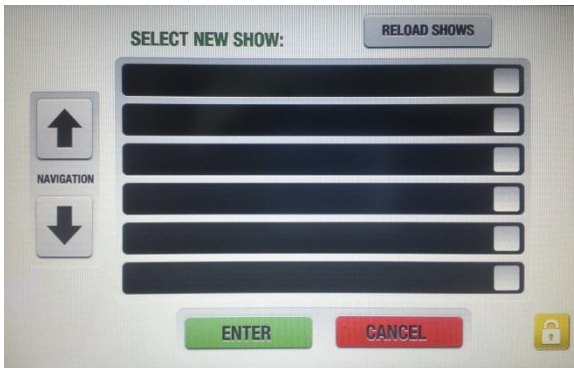
1. Enter your passcode:



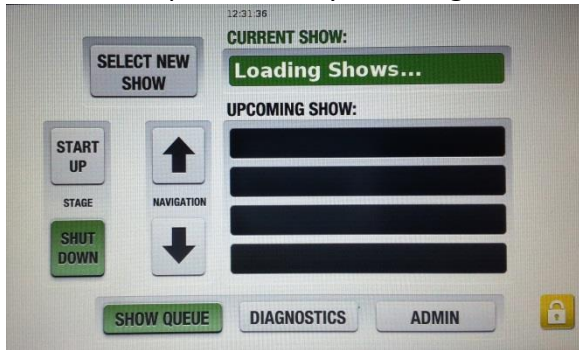
2. Select the "Select New Show" button:



3. Select the "Reload Shows" button:



4. The touch panel will say "Loading Shows..."



5. The list of upcoming shows is now refreshed and you can start up the show.



Start a segment from the Pro Commander

If the Touch Panel is not functioning or if you need to verify that the Pro Commander is starting a segment follow the procedure below:

1. From the front of the Pro Commander, move the joystick labeled Setup down until you see "Start Show?" on the display.



2. Move to the desired segment by using the joystick and then press in on the joystick to make the selection.



3. The Pro Commander should not be running the segment selected and the display will show the segment and data.

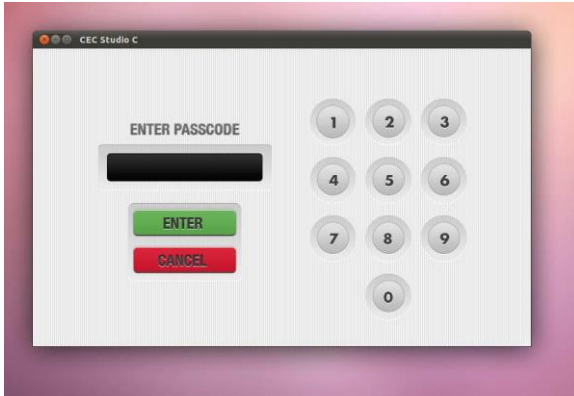


Check Individual Movements or Lights

If it is necessary to check if a certain movement or light is getting an output from the Pro Commander, then follow the directions below:

Note The show must be in the shut down position for the diagnostics to work correctly

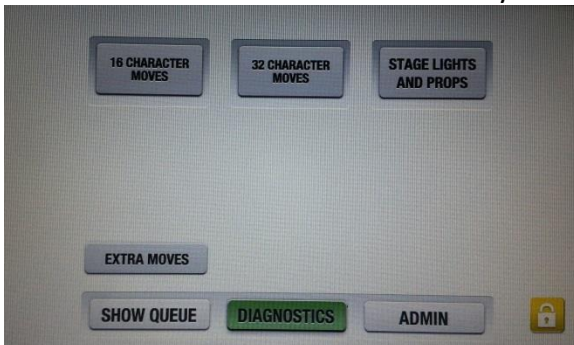
1. Enter your passcode:



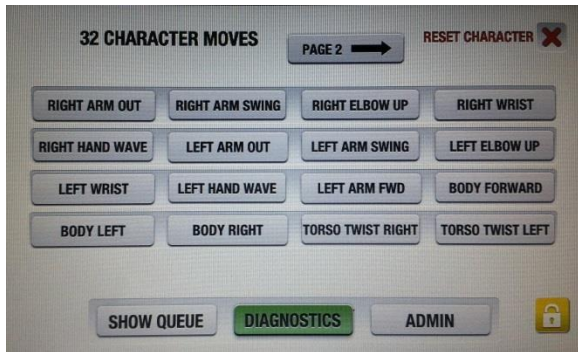
2. Select the "Diagnostics" button:



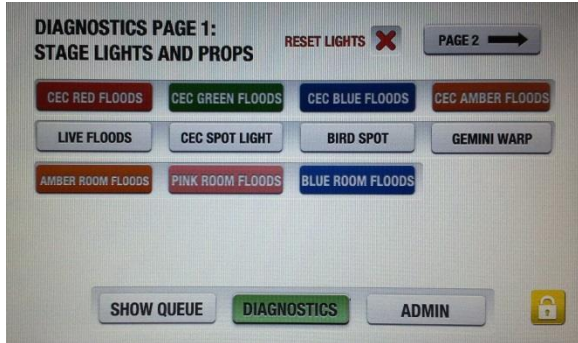
3. Select the desired button based on your type of show:



4. For character movements select the desired movement and the LED on the Valve Bank Box should turn on for that movement.



5. When testing the lights, the appropriate light should turn on when the button is pressed.



Resetting the LED Controller Box

There is a reset process. If the LED rope lights are not operating correctly you can hold down all 4 buttons on top at the same time cycle the power, do not release the buttons until the controller completely powers up. This should reset the controller and rectify the problem of the lights not chasing or changing colors.

If you have any questions please contact Tech Support at (785) 862-6002 Thank you



DMX Address & Dip Switch Settings

LED Light Panel #	DMX Channel- To set Dip switch	Total channels used	
1	1	2	3
2	4	5	6
3	7	8	9
4	10	11	12
5	13	14	15
6	16	17	18
7	19	20	21
8	22	23	24
9	25	26	27
10	28	29	30
11	31	32	33
12	34	35	36
13	37	38	39
14	40	41	42
15	43	44	45
16	46	47	48
17	49	50	51
18	52	53	54
19	55	56	57
20	58	59	60
21	61	62	63
22	64	65	66
23	67	68	69
24	70	71	72
25	73	74	75
26	76	77	78
27	79	80	81
28	82	83	84
29	85	86	87
30	88	86	87
31	91	92	93
32	94	95	96
33	97	98	99

Vertical Chase Lights Chuck's stage				
A	100	101	102	103
Horizontal Chase Lights Chuck's stage				
B	104	105	106	107
Left side & Right side Chase Lights				
C & D	108	109	110	111

Wall Silhouette's				
W1	200	201	202	Microphone
W2	203	204	205	Guitar
W3	206	207	208	TaDah
W4	209	210	211	Hooray
W5	212	213	214	Jump

Right Elation		125
Left Elation		125
Ticket Blaster Elation		150

Dimmer Pack Address		175	
* Dimmer Pack Spot		175	Outlet 1
* Dimmer Pack Ticket Blast Sign		176	Outlet 2
* Dimmer Pack Gemini		177	Outlet 3

Resetting the IP Address and Factory Settings

- Using the joystick on the front of the Pro Commander, press down twice to get to the menu screen, then press the joystick to select.



- Press the joystick to select Main Setup.



- Press the joystick to select Set IP Address.



- Using the joystick, set the IP Address to 010.000.000.101

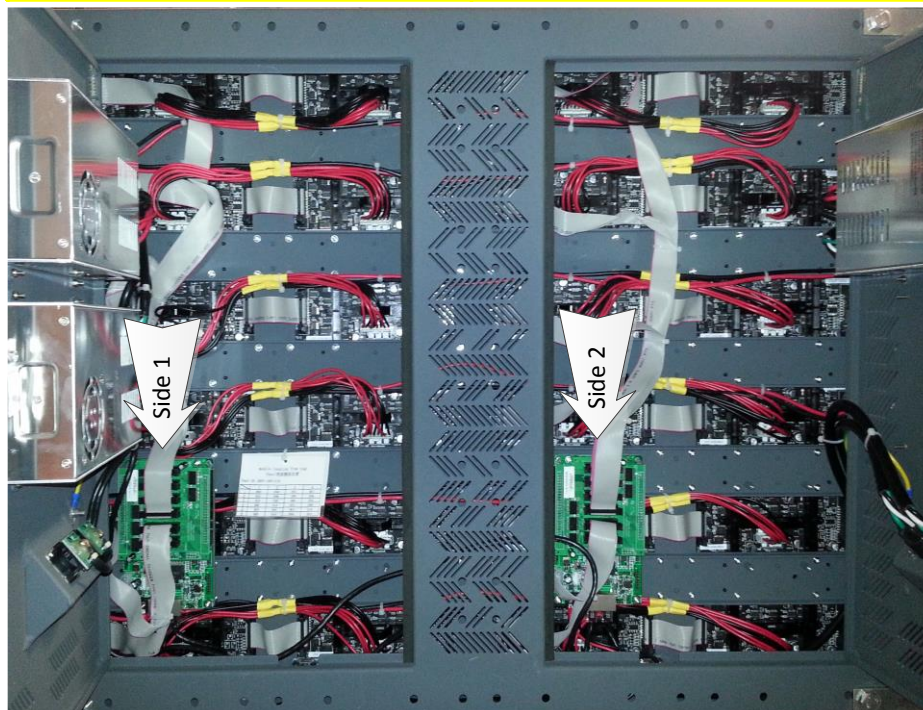


- Press left on the joystick to save.
- Press down on the joystick two times to locate the Set to Factory Feature



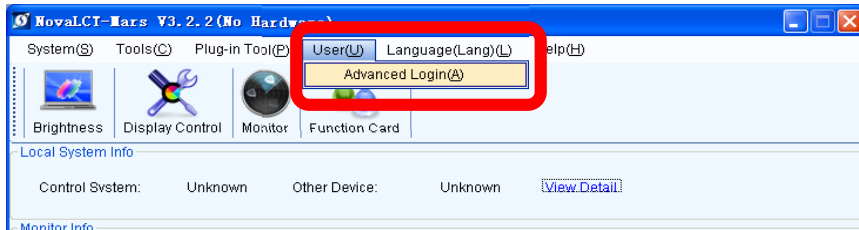
- Press the joystick two times until you see random characters on the screen.
 - This means the defaults have been loaded.
- Cycle power on the Pro Commander to implement these changes.

COL Desay (Nova) LED Panel Layout



Flashing the Screen Address on LED Controller Boards

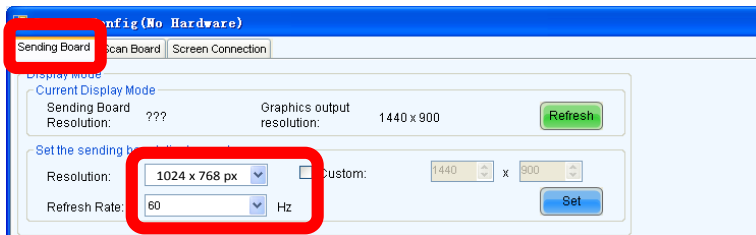
- Install the drivers for the USB to Serial Port on a Laptop PC
- Plug in the USB cable from the USB port on the computer to the USB port on the back of the Desay Controller
- Launch the LCT-Mars software
- Login as an Advanced User
 - Click on User
 - Click on Advanced Login
 - Enter the password “666”



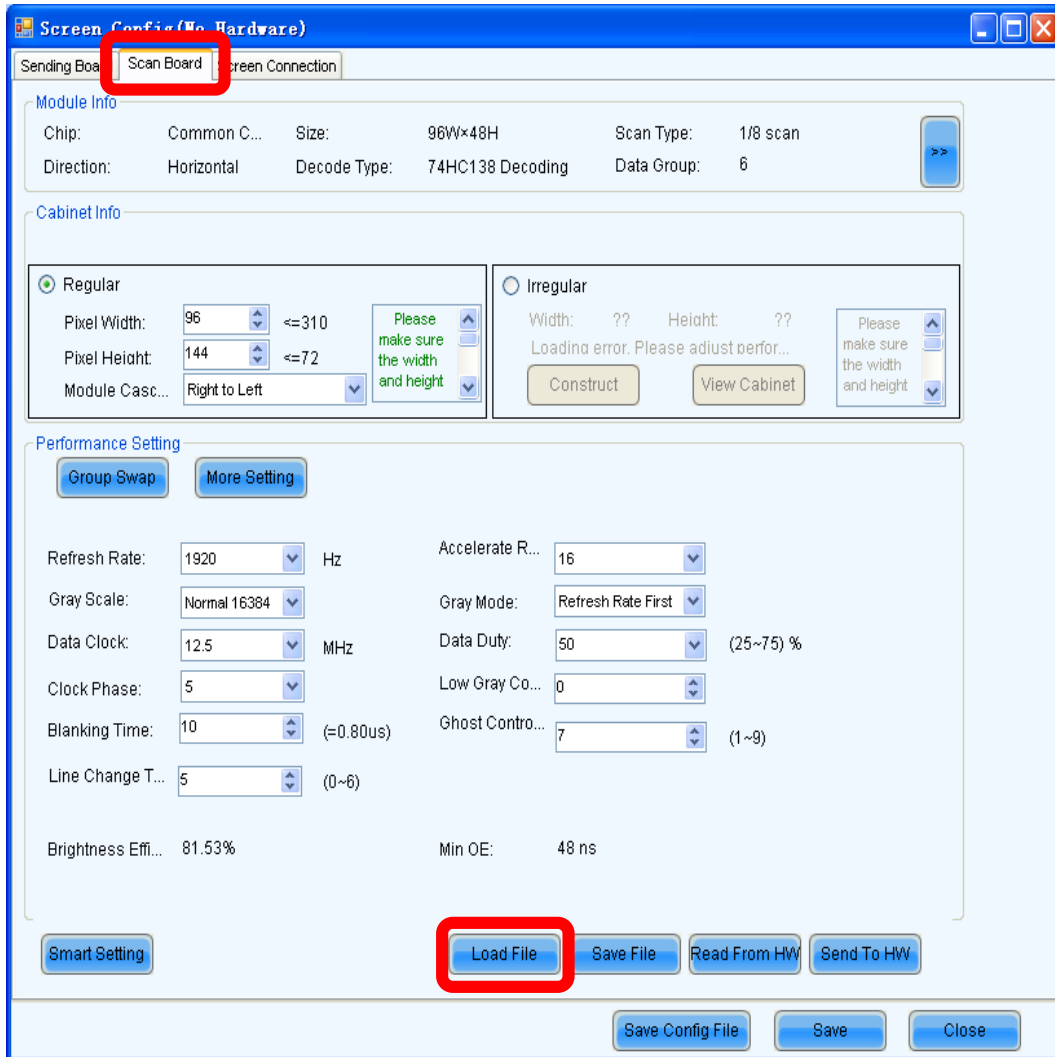
- Select the icon for Screen Config that appeared



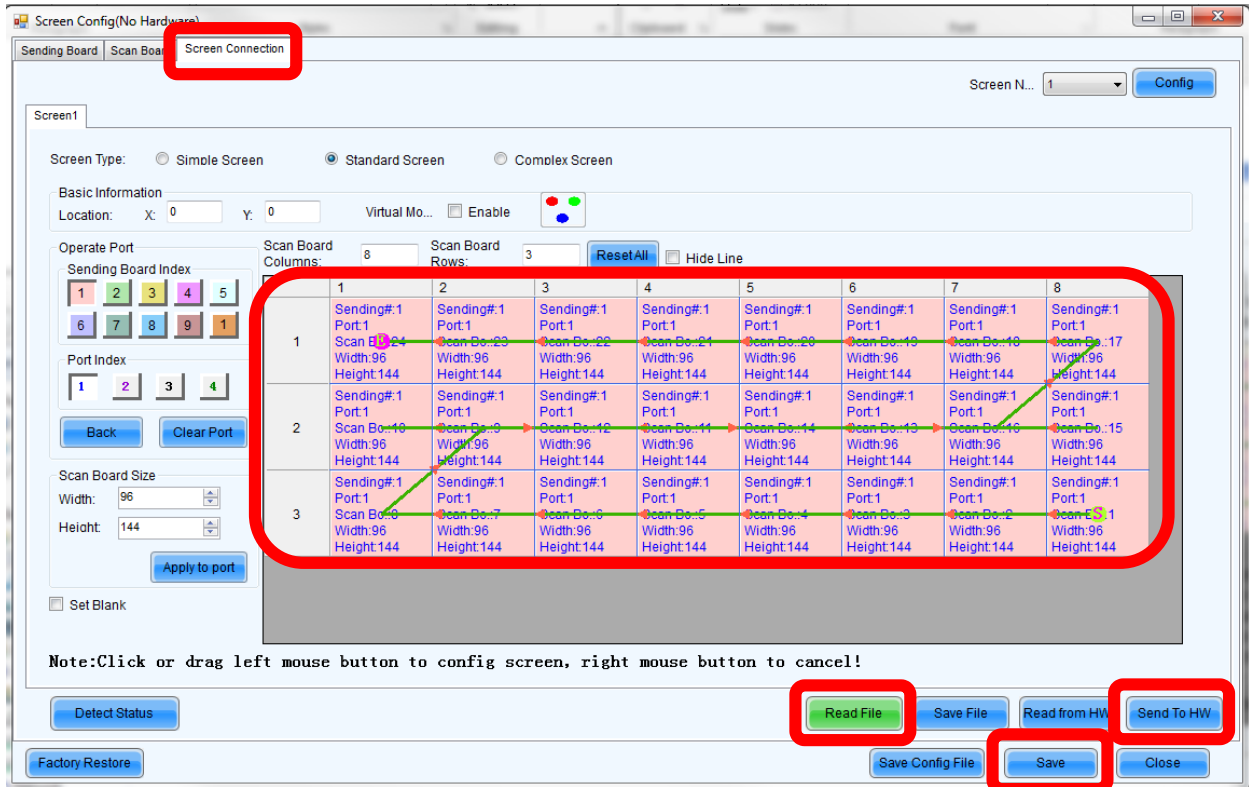
- The Screen Config page will open into the Sending Board tab.
- Set the Resolution to 1024 x 768 at 60Hz (This is the output of the Video Processor)



- Click on the Scan Board tab
- Click on Load File
- Select the file named “P4.rcfg”
- The settings should get updated for the Scan Board



- Click on the Screen Connection tab
- Click on Read File
- Select the file name “screen wire map.scr”
- The settings should auto load to the correct settings



- Click on “Send To HW” (The screen should show the correct video now)
- Click on “Save”
- Click on “Close”
- Close the LCT-Mars Software
 - When prompted select save to hardware to make the changes permanent

NOTE: If the screen does not fit exactly, the scale settings on the Video Process will need to be adjusted to fit the screen.

CIRCLE OF LIGHTS (NOVA) TECHNICAL MANUAL

Date of Origin: August 2014
Archived: 3-12-16
Submission by ChuckEZone
Version 1.0

The documents contained herein are for educational use only. Please do not replicate, redistribute, or make any unauthorized printings. All intellectual property including characters, artwork, photography, and slogans are trademark and/or copyright their respective owners.

