

# ShowBiz Pizza Time, Inc.



## FRANCHISE NEWS



#29

February 13, 1987

### WEEKLY SALES

AVERAGES FOR WEEK ENDING 2/8/87

SPP Franchised Units (67): \$15,404  
 SPP Company Units (89): \$20,075  
 SPP International  
 Franchised Units (4): \$ 7,764

CEC Franchised Units (74): \$17,727  
 CEC Company Units (31): \$20,447  
 CEC International  
 Franchised Units (8): \$17,727

#### ShowBiz Pizza Place and Chuck E. Cheese

Average of Top 20 Units = \$27,094

1. San Jose (Tully), CA  
M.C.A. & Associates
2. Tacoma, Wa  
Northwest Partners V
3. Portland, OR  
Computerized  
Entertainment Concepts
4. Milwaukee (Chase), WI  
R. C. Schmidt, Jr.
5. Victoria Park, ONT  
All Canadian Pizza Shows
6. Bridgeville, PA  
McKnight Family Centers
7. Burnaby, BC  
Nintendo Entertainment  
Centres
8. Clarksburg, WV  
Clarksburg Entertainment
9. West Allis, WI  
R. C. Schmidt, Jr.
10. Huntington, WV  
Huntington Entertainment
11. Brooklyn, NY  
Family Showtime Theatre  
of Bay Parkway
12. Albany, NY  
Pizza Time of New York
13. Pearl City, HI  
Selwyn S. P. Chan
14. Wilmington, DE  
McBiz Corporation
15. Greece, NY  
Pizza Time of New York
16. Hayward, CA  
Ulrike-Grandjean Corp.
17. North Olmsted, OH  
Electronic Theatre  
Restaurants Corporation
18. Syracuse, NY  
Pizza Time of New York
19. West Mifflin, PA  
McKnight Family  
Centers #3
20. El Toro, CA  
F. E. C., Inc.

#### ShowBiz Pizza Place

Average of Top 20 Units = \$20,991

1. Clarksburg, WV  
Trio Foods Enterprises
2. Huntington, WV  
Huntington Entertainment
3. Wilmington, DE  
McBiz Corporation
4. Lafayette, LA  
Acadiana Productions
5. Honolulu, HI  
Pal Anderson  
Enterprises
6. Phoenix #2 (Mesa), AZ  
S-M Pizza
7. Greensboro, NC  
Mike Hilton
8. Greenville, SC  
McBiz Corporation
9. Knoxville, TN  
Gary Long
10. Nashville #2, TN  
BAM, Inc.
11. Davenport, IA  
McBiz Corporation
12. Chattanooga, TN  
McBiz Corporation
13. Des Moines, IA  
McBiz Corporation
14. Fargo, ND  
Great Plains Associates
15. Little Rock #2, AR  
Harold Burlingame
16. Memphis #2, TN  
McBiz Corporation
17. Phoenix #1, AZ  
S-M Pizza
18. Nashville #1, TN  
BAM, Inc.
19. Lexington, KY  
McBiz Corporation
20. Little Rock #1, AR  
Harold Burlingame

#### Chuck E. Cheese

Average of Top 20 Units = \$26,828

1. San Jose (Tully), CA  
M.C.A. & Associates
2. Tacoma, WA  
Northwest Partners V
3. Portland, OR  
Computerized  
Entertainment Concepts
4. Milwaukee (Chase), WI  
R. C. Schmidt, Jr.
5. Victoria Park, ONT  
All Canadian Pizza Shows
6. Bridgeville, PA  
McKnight Family  
Centers #3
7. Burnaby, BC  
Nintendo Entertainment  
Centres
8. West Allis, WI  
R. C. Schmidt, Jr.
9. Brooklyn, NY  
Family Showtime Theatre  
of Bay Parkway
10. Albany, NY  
Pizza Time of New York
11. Pearl City, HI  
Selwyn S. P. Chan
12. Greece, NY  
Pizza Time of New York
13. Hayward, CA  
Ulrike-Grandjean Corp.
14. North Olmsted, OH  
Electronic Theatre  
Restaurants Corporation
15. Syracuse, NY  
Pizza Time of New York
16. West Mifflin, PA  
McKnight Family  
Centers #3
17. El Toro, CA  
F. E. C., Inc.
18. Monroeville, PA  
McKnight Family Centers
19. Milwaukee (Good Hope), WI  
Family Entertainment  
Center #7401
20. Brookfield, WI  
R. C. Schmidt, Jr.

# CONGRATULATIONS TO

#29

Page 2

## BILL AND JIM RUDOLPH

Pittsburgh Chuck E. Cheese franchisees, Bill and Jim Rudolph, were recently honored as "Men of the Year, 1986" for outstanding community service by The Vestors, a local service organization.

ShowBiz Pizza Time, Inc. is very proud of Bill and Jim for their community activities and for helping to make Pittsburgh, Pennsylvania "The Most Livable City in the USA".

If you are ever in the Pittsburgh airport, look for their recognition plaque and photos in the main lobby.



# OPERATIONAL

# NEWS

#29

Page 3

## CHUCK E. PACKAGE AVAILABLE

An entire Chuck E. Cheese package will be auctioned on Saturday, February 28, 1987 at 10:00 a.m. at:

2578 S. Hamilton Road  
Columbus, OH.

For more details contact:

Joe Presswood Auctioneers  
800-231-0782  
800-392-5306 (Inside TX. only)

## SERVICE ALERT

Pentes Design, Inc. has just alerted us to a potential problem in the netting support. Attached is material from them with solutions. If you have a Playport from Pentes Design, please see that this information gets to your technician for action.

## SHOWBIZ T-SHIRTS

A new T-Shirt supplier is now on line with stock available in the ShowBiz group design. The cost is \$2.25 each plus freight with orders in multiples of 12. Sizes available are:

Small Toddler	4 T
Medium Child	6-8
Large Child	10-12
Extra Large Child	14-16

All outstanding orders for ShowBiz T-Shirts through Stevenson's have been cancelled. To place new orders, call:

Galleria International, Inc.  
713/446-7000  
Robert Waggoner

We will notify you in the next few weeks as individual character shirts become available.

Chuck E. Cheese T-Shirts are available through Dennis Foland.

## CONGRATULATIONS!

To Dennis and K. C. Luptak on the birth of their son, Jonathan, February 1, 1987. Dennis is the General Manager of the Chuck E. Cheese in Monroeville, PA, owned by McKnight Development.

1987 TECHNICAL WORKSHOPS

Regional Technical Workshops will be conducted at the following locations during the first half of 1987:

Chuck E. Syracuse, NY FEB 27  
Cheese 2803 Brewerton Rd.  
315/455-7029

Chuck E. San Jose, CA MAR 27  
Cheese 2445 Fontaine Rd.  
408/238-9110

ShowBiz Davenport, IA MAY 4  
903 E. Kimberly Rd.  
319/391-2041

Chuck E. Brooklyn, NY MAY 29  
Cheese 8949-8961 Bay  
Parkway  
718/996-8310

We urge you to have your technician attend the workshop nearest your city. Please call the Franchise Department and confirm your attendees with Nanci McAlister, ext. 434.

SEMINAR PARTICIPANTS

We will be printing a listing of seminars and their participants on a weekly basis in the Franchise News. Below are those which were held during the first half of January:

**Host: T'NT PARTNERSHIP**  
Billings, Montana  
ShowBiz Pizza Place

Participants:

Billings, MT

Bob Olson  
Melanie Frestner  
Rick Keemann  
Bob Durden  
Linda Quintrell  
Wayde Cullinan  
Mary Huck  
Robert Reichert  
Lindy Stevens  
Barb Willis  
Janelle Bourne

**Host: DELPHI INVESTMENTS, LTD**  
Edmonton, Alberta  
Chuck E. Cheese

Participants:

Edmonton, AL

Greg Liber  
Mary McInnis  
Christie Mock  
Sheri Cartier  
Brian Kamp

Calgary, AL

John Whitney  
Susan Armstrong  
Tim Fischer  
Emil Kogut  
Brian Kamp

**Host: NELSON PROPERTIES, INC.**  
Gulfport, Mississippi  
ShowBiz Pizza Place

Participants:

Gulfport, MS

Steve Nelson (Franchisee)  
Dianne Morgan  
Sam Morgan  
Chuck Landis  
David Loskamp  
Melvin Austin

**Host: GREAT PLAINS ASSOCIATES**  
Fargo, ND  
ShowBiz Pizza Place

Participants:

Fargo, ND

Mike Woytasek  
Taji McFarlane  
Cory Orvedal  
Larry Villella  
Steve Eastvold  
James Novotny  
Tim Smithson (Franchisee)

Host: **McBIZ CORPORATION**  
Davenport, Iowa  
ShowBiz Pizza Place

Participants:

Davenport, IA

Bryon Schlosser (Franchisee)  
Bob Weil  
Jeff Ranes  
Sharon Miller  
Larry Sheedy

Des Moines, IA

Kirk Williams

Cedar Falls, IA

Chris Jennings

Portage, MI

Barbara Moyer

Cedar Rapids, IA

Ted Ross

Host: **WELLINGTON DEVELOPMENT OF FLORIDA**

Jacksonville-Regency, Florida  
ShowBiz Pizza Place

Participants:

Jacksonville-Regency, FL

Glenn Thomas  
Barbara Zamonis  
Lance Horne

Jacksonville-Org. Park, FL

Lori Griffith  
Terilyn Bunker  
Cathy Hall

Host: **NORCENCO, INC.**  
Richfield, Minnesota  
Chuck E. Cheese

Participants:

Richfield, MN

Jack Rietschel  
Marc Teren (Franchisee)

St. Cloud, MN

Paul Ankenman  
John Fitzgerald

Blaine, MN

Jordan Mauer  
Erik Johnson  
Sarah Barby

Burnsville, MN

Chris Pritchett  
Kelly Garrison

Maplewood, MN

John Tidd  
John Goodman



## PENTES DESIGN INC.

1346 Hill Rd. ■ Charlotte, North Carolina, 28210 ■ (704) 552-5400

### SERVICE ALERT

This SERVICE ALERT of February 10, 1987 is to advise our PLAYPORT customers of a potential problem that may exist on play elements that use a cable as a support system for netting that is part of the play element. If your PLAYPORT contains any of the following play elements, this SERVICE ALERT may affect you:

- . Cargo Climbs/woven rope netting
- . Web Walks/flat sewn nylon strapping  
(not to be confused with Web Crawls)
- . Bubble Mountains/light netting over large balls

Some installations of these play elements used one continuous piece of cable to form the bottom support system. The cable may have been connected together by looping around itself or it may have been terminated on either side of a #51 Kee Klamp. In either case, we have discovered that the use of one continuous piece of cable as the bottom support system can cause the cable to saw through the Kee Klamps.

IMPORTANT: IF THE CABLE IS PERMITTED TO SAW THROUGH A KEE KLAMP, STRUCTURAL FAILURE OF THE CABLE SUPPORT SYSTEM CAN OCCUR. THIS COULD RESULT IN SERIOUS INJURIES IF THE PLAY ELEMENT IS IN USE AT THE TIME.

We request that you please inspect your PLAYPORT immediately and look for any of the following:

1. One continuous piece of cable being used on the bottom to support the net or web. The easiest indication that more than one piece of cable was used is to count the number of #51 Kee Klamps used to support the cable on the play element.
2. Count the number of splices or terminating points of your cable. Just one or two indicates one piece of cable was used. Four, six, or eight or more terminating points indicates two or more sections of cable were used. In that case you should not experience problems, but we recommend that you proceed with the inspection.

3. Check all the #50, #51, and #52 Kee Klamps for evidence of any sawing action by the cable. Check both the bottom net or web support cables and the top box net support cables.

IMPORTANT: IF THERE IS ANY EVIDENCE OF THE CABLE SAWING THROUGH A KEE KLAMP, CLOSE DOWN THE PLAY ELEMENT IMMEDIATELY AND DO NOT OPERATE UNTIL APPROVED REPAIRS ARE MADE.

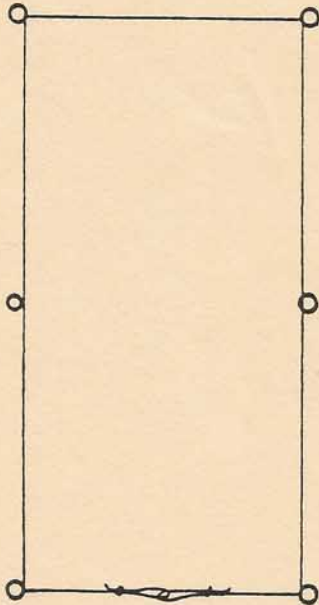
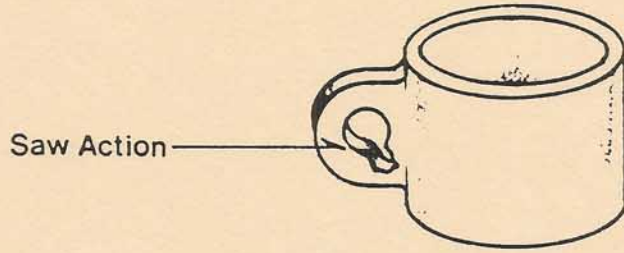
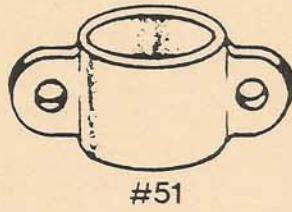
4. Check the cable where it goes through the Kee Klamps and look for signs of excessive wear. If there is evidence of excessive wear or fatigue at these points, that indicates the cable has the potential to break.

IMPORTANT: IF THERE IS ANY EVIDENCE OF EXCESSIVE WEAR OR FATIGUE ON THE CABLE, CLOSE DOWN THE PLAY ELEMENT IMMEDIATELY AND DO NOT OPERATE UNTIL APPROVED REPAIRS ARE MADE.

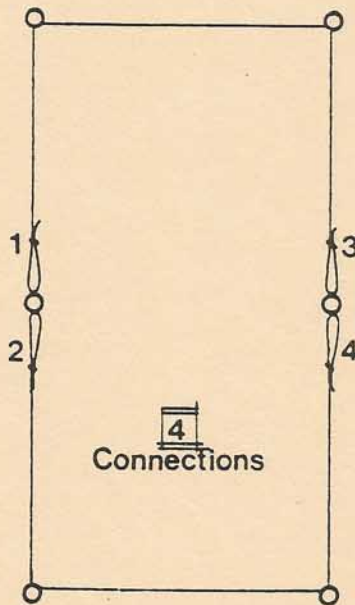
Should you suspect, after you have inspected your PLAYPORT, that you have a problem, please contact Pentes Design. We will be happy to work with you to solve the problem in an expedient manner. If you find you do not have a problem, it is recommended that you add this inspection to your periodic maintenance program.

Contact: Tom Kubik  
Pentes Design, Inc.  
1346 Hill Road  
Charlotte, N.C. 28210  
  
Tel: 704-552-5400

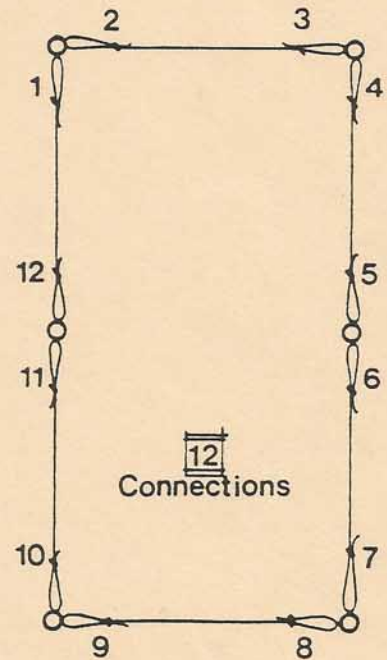
# KEY KLAMPS



**WRONG**



**RIGHT**



**RIGHT**



# SPT, INC. FRANCHISE NEWS

(Issue #29 - February 13, 1987)

Date of Origin: 1987  
Archived: 8-12-20  
Submission by Sptweb  
Version 1.0

The documents contained herein are for educational use only. Please do not replicate, redistribute, or make any unauthorized printings. All intellectual property including characters, artwork, photography, and slogans are trademark and/or copyright their respective owners.

