



Christmas
1990



CHUCK E.'S CHRISTMAS SHOW

SET AND COSTUME INSTRUCTIONS

YOU WILL BE USING MOST OF THE SAME DECORATIONS AS LAST YEAR:

✓3	LIGHT ROPES (P & H, INC. 800/468-8673)
✓5	RED AND WHITE STRIPED SCARVES
✓3	RED "SWEATERS" (COWAN COSTUMES 817/641-3126)
✓5	SANTA HATS
✓9	4" FOAM SNOWFLAKES
✓1	WREATH, 24" PINE
3	BUNDLES OF WHITE AND SILVER GARLAND, (125')
✓1	BUNDLE DACRON SNOW
✓1	PKG. IRRIDESCENT GLITTER
✓1	INSTRUCTION MANUAL
✓1	JASPER'S RED AND WHITE STRIPED SHIRT (COWAN'S)
✓1	ROPE LIGHT CONTROLLER

GENERAL SUPPLIES REQUIRED:

SAFETY PINS
SCISSORS
CORD, ROPE OR FISHING LINE
T-PINS
SELF-ADHESIVE HOOK VELCRO
STRAIGHT EDGE OR YARDSTICK
STAPLE GUN AND STAPLES

IF YOU ARE MISSING OR NEED TO REPLACE ANY STANDARD SEASONAL ITEMS (SNOW, GARLAND) YOU WILL PROBABLY WANT TO PURCHASE THEM LOCALLY. IF YOU NEED CUSTOM MADE ITEMS PLEASE CALL **SHELLY ATKINS AT THE HOME OFFICE 214/258-8507.**

THIS INSTALLATION CAN BEST BE ACCOMPLISHED USING A MINIMUM OF 2 PEOPLE. READ ALL THE INSTRUCTIONS BEFORE BEGINNING THE INSTALLATION. IF YOU DO NOT HAVE A STANDARD STAGE, YOU MAY NEED TO ADAPT THE DESIGN TO FIT YOUR PARTICULAR STORE. FOR STORES WHICH HAVE THE FULL-SIZE HOUSES, INSTRUCTIONS ARE INCLUDED AT THE END OF THIS PACKET. HAVE A GOOD TIME DECORATING AND -----

H A P P Y H O L I D A Y S !

COSTUME INSTRUCTIONS

CHUCK E. CHEESE - RED SWEATER, RED HAT, STRIPED SCARF, 3 SNOWFLAKES



RED HAT- SAFETY PIN HAT TO HEAD
IN AT LEAST 2 PLACES.

SWEATER- SLIP SWEATER ON OVER FUR
BODY AND VELCRO DOWN THE
BACK.

SNOWFLAKES - APPLY 2 NARROW STRIPS
OF SELF-ADHESIVE VELCRO
TO THE BACK OF EACH
SNOWFLAKE IN AN "X".
THE VELCRO SHOULD REACH
ALL THE WAY TO THE
POINTS. APPLY ALL 3
SNOWFLAKES IN A ROW
ACROSS THE CHEST AREA
OF THE SWEATER.

SCARF- THREAD SCARF THROUGH BOTH
SHOULDER LOOPS ON FRONT AND
BACK. PIN TO BODY IN FRONT.

JASPER T. JOWLS - RED HAT, RED & WHITE STRIPED SHIRT, RED & WHITE SCARF



RED HAT- SAFETY PIN HAT TO HEAD IN AT LEAST TWO PLACES.

RED & WHITE SHIRT- SLIP THIS SHIRT ON OVER JASPER'S FLANNEL SHIRT AND OVERALLS. VELCRO DOWN THE FRONT AND BACK.

RED & WHITE SCARF- WRAP THE SCARF LOOSELY AROUND JASPER'S NECK AND OVERLAP ON HIS LEFT SHOULDER. SAFETY PIN SCARF TO SHIRT AT EACH SHOULDER, & AT FRONT AND BACK.

MR. MUNCH - RED HAT, RED SWEATER, RED & WHITE SCARF, 3 SNOWFLAKES



RED HAT- SAFETY PIN HAT TO HEAD IN AT LEAST TWO PLACES.

SWEATER- SLIP SWEATER ON OVER FUR BODY AND VELCRO DOWN THE BACK.

SNOWFLAKES- APPLY A PIECE OF SELF-ADHESIVE VELCRO TO THE BACK OF EACH POINT OF EACH SNOWFLAKE. APPLY ALL 3 SNOWFLAKES IN A ROW ACROSS THE CHEST AREA OF THE SWEATER.

SCARF- THREAD SCARF THROUGH BOTH SHOULDER LOOPS ON THE SWEATER. PIN TO FRONT.

HELEN HENNY - RED HAT, RED & WHITE SCARF



RED HAT - SAFETY PIN HAT TO WIG CAP
IN 3 PLACES.

RED & WHITE SCARF - WRAP SCARF
LOOSELY AROUND
HER NECK. SAFE
PIN SCARF TO
SHOULDERS, AND
AT FRONT AND BA

PASQUALLY - RED SWEATER, RED HAT, STRIPED SCARF, 3 SNOWFLAKES



RED HAT - SAFETY PIN HAT TO HEAD IN
AT LEAST TWO PLACES.

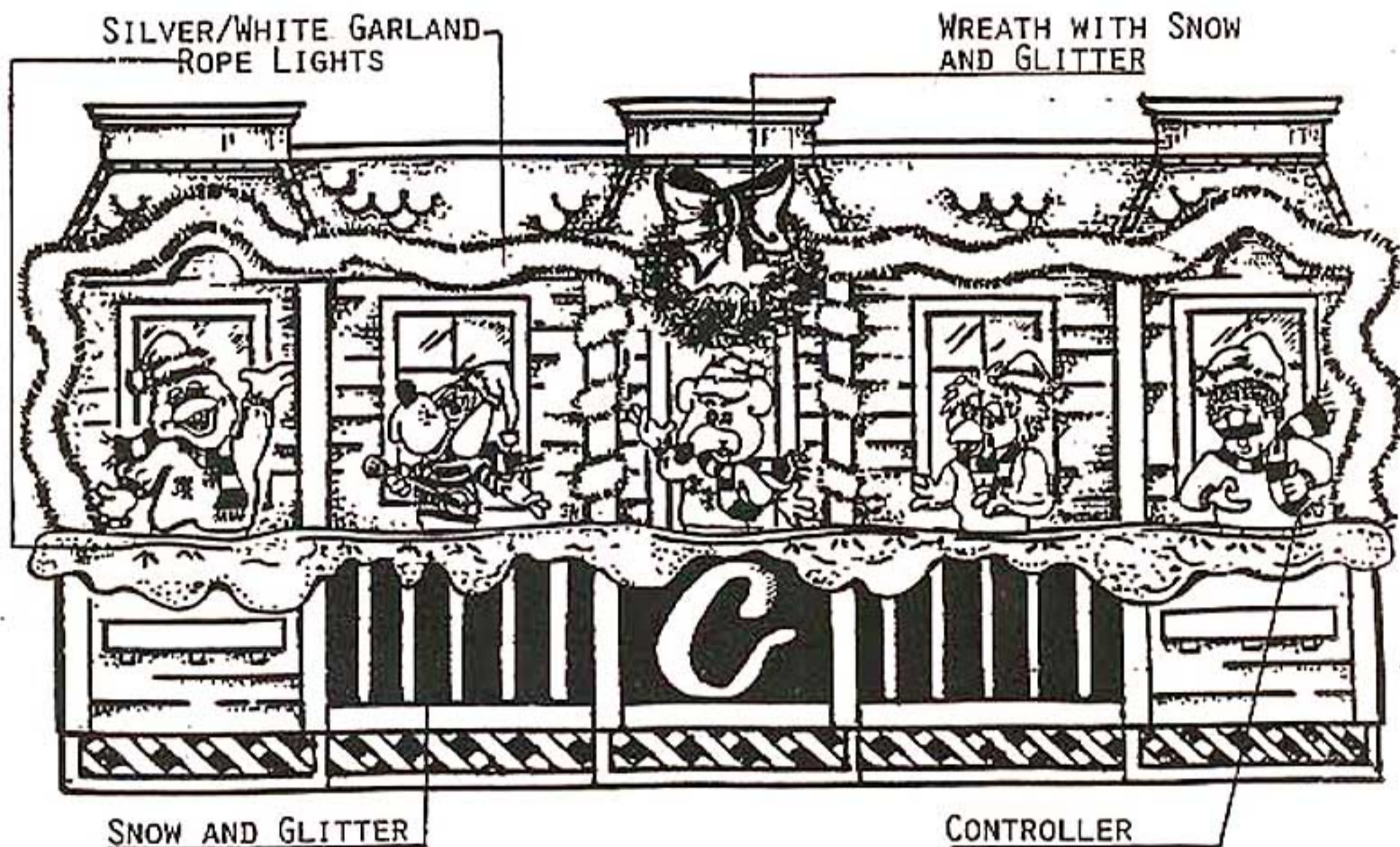
SWEATER - SLIF SWEATER ON OVER BODY
AND VELCRO DOWN THE BACK.

SNOWFLAKES - APPLY A PIECE OF SELF-
ADHESIVE VELCRO TO THE
BACK OF EACH POINT OF
EACH SNOWFLAKE. APPLY
ALL THREE SNOWFLAKES IN
A ROW ACROSS THE CHEST
AREA OF THE SWEATER.

SCARF - THREAD SCARF THROUGH BOTH
SHOULDER LOOPS ON THE SWEATER

DECORATIONS - 3 ROPE LIGHTS, 5 GARLAND, 1 ROLL SNOW, 1 WREATH,
1 LB. GLITTER

LEAVE THE ROPE LIGHT CONTROLLER PLUGGED INTO THE A/C SWITCHER
BEHIND PASQUALLY. LAY THE ROPE LIGHTS ON THE LEDGE OF THE
STAGE.



HANG THE GARLAND AROUND THE OUTSIDE EDGES OF THE STAGE AS SHOWN.
STAPLE THRU THE GARLAND ONTO THE HOUSE.

WRAP PLAIN GARLAND AROUND THE CENTER TWO POLES THAT ARE ON EITHER
SIDE OF CHUCK E..

TEAR OR CUT THE ROLL OF SNOW IN HALF LENGTHWISE. STAPLE SNOW
OVER THE FRONT EDGE OF THE STAGE. PULL AND FLUFF IT UP INTO
PEAKS AND VALLEYS, OVER THE ROPE LIGHTS. SPRINKLE ALL OVER WITH
IRIDESCENT GLITTER.

PLACE ONE LAST BLOB OF SNOW IN THE BOUGH OF THE WREATH AND GLITTER.
HANG WREATH DIRECTLY ABOVE CHUCK E. AT TOP CENTER STAGE.

YOUR INSTALLATION IS NOW COMPLETE !!!!



CHUCK E. CHEESE'S

CHRISTMAS

CHRISTMAS INSTALLATION FOR CHUCK E.'S HOUSE

Following are the instructions for installing the Christmas show in locations which have the Chuck E. Cheese house. Use the pink installation manual in conjunction with the instructions below.

COSTUMES: Dress Munch and Pasqually exactly as shown in the pink manual. The third shirt which is slit up the front, is for Jasper. Put this shirt, on him, over his plaid shirt, and under his overalls. Use all 5 santa hats and scarves on all 5 characters.

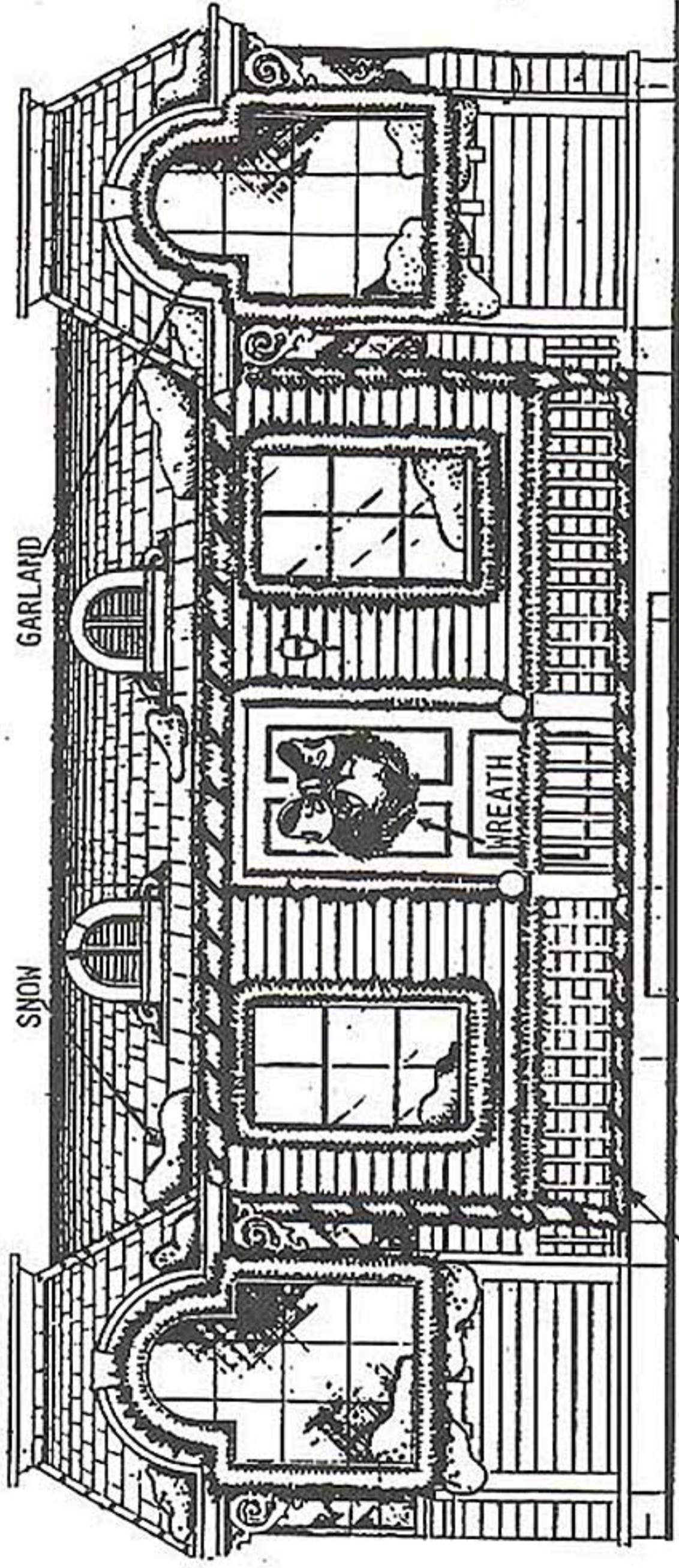
WREATH: Hang the wreath on the front door.

SNOW: Tear off hunks of snow and plop them, in a natural fashion, on the window sills, eaves, railings and floor of the house (staple if necessary). Sprinkle with the iridescent glitter.

GARLAND: Use the garland to trim around Munch and Pasqually's front windows, the 2 windows on either side of the door, and around the door.

LIGHT ROPE: Connect 3 ropes into one long one. Twist garland around the light rope. Staple gun (thru garland only) around the front porch of the house as shown on diagram attached. Plug rope into back of controller. (Company stores see lighting instructions attached). Set the speed to the tempo of the first song of the first skit: "Jingle Bells."

CHUCK E.'S HOUSE
CHRISTMAS



GARLAND

SNOW

WREATH

LIGHT ROPE WITH GARLAND

**CHRISTMAS INSTALLATION FOR CHUCK E. STAGE
WITH MUNCH'S MAKE BELIEVE BAND**

Use these instructions in conjunction with the pink installation pages.

Costumes: Dress Munch and Pasqually exactly as shown (refer to pink pages). The third shirt which is slit up the front, is for Jasper. Put this shirt on him, over his plaid shirt and under his overalls. Use all 5 santa hats and scarves on all 5 characters.

Wreath: Hang the wreath on Pasqually's back wall.

Snow: Tear off hunks of snow and place them as snow drifts as shown. Sprinkle with the iridescent glitter.

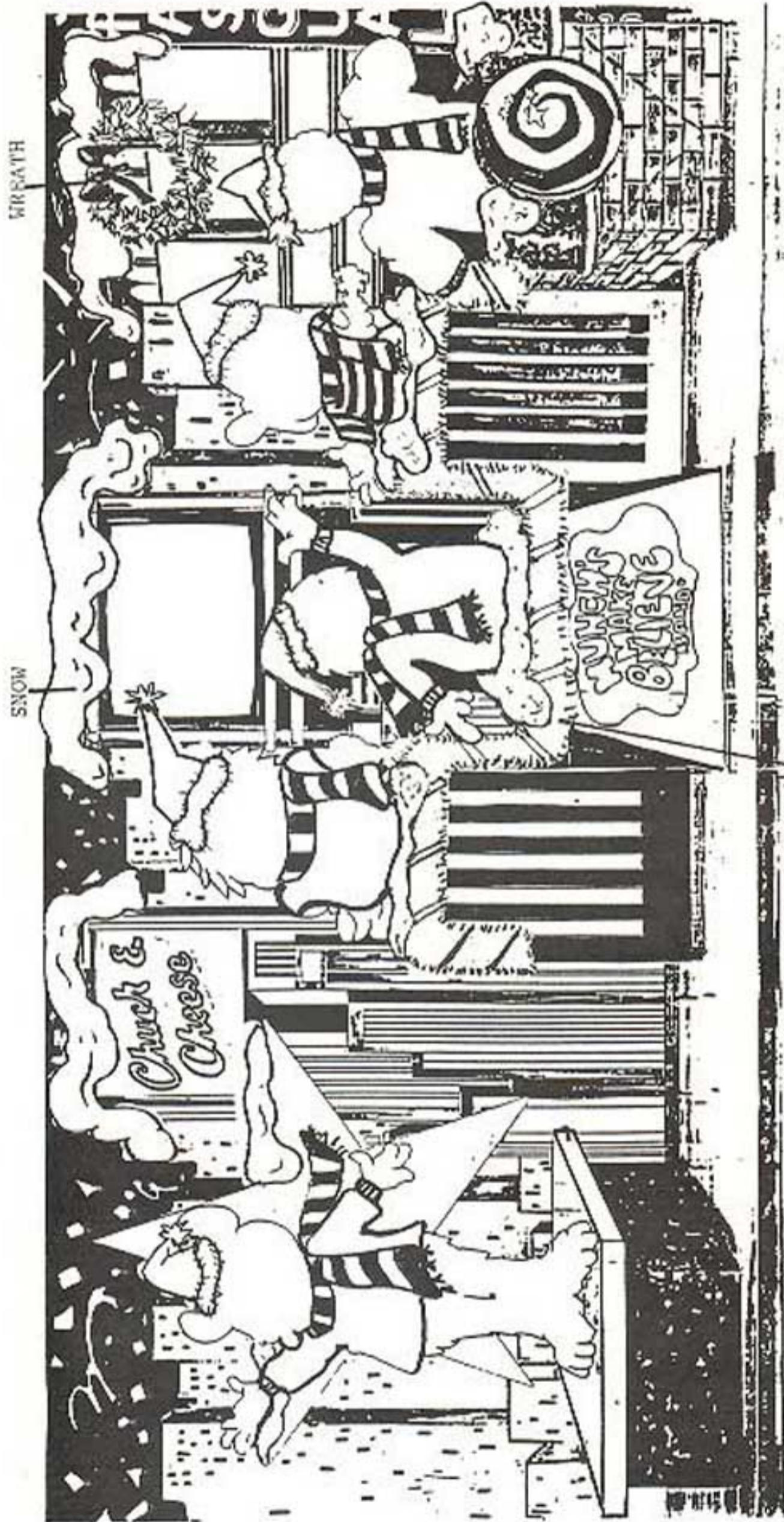
Garland: Use the garland to trim around Helen, Munch, and Jasper.

Light Rope: Connect 3 ropes into one long one. Twist around the light rope. Staple gun (through garland only) around the front of Helen, Munch, and Jasper's props. Plug rope into back of controller. Set the speed to the tempo of the first song on the first skit "Jingle Bells".

You may have decorations left over which could be utilized around your store ie; doorways, order counter, windows, etc.

CHRISTMAS

CHUCK E. CHEESE STAGE SHOW WITH MINCH'S MAKE BELIEVE BAND



GARLAND AND LIGHT ROPE

1990 CHRISTMAS COSTUME CHANGE MANUAL

Date of Origin: 1990
Archived: 5-13-08
Submission by PizzaCam
Version 1.0

The documents contained herein are for educational use only.
Please do not replicate, redistribute, or make any unauthorized
printings. All intellectual property including characters,
artwork, photography, and slogans are trademark and/or
copyright their respective owners.

